



METER BOXES

GAS, ELECTRIC & COMBINATION

Metroll Meter Boxes are engineered for quality, built tough and are excellent value. Manufactured from 1.00mm BMT Galvanised steel. Available in combination or single sizes with optional view panel and lock.

ATCO & WESTERN POWER COMPLIANT

Metroll Meter Boxes comply with:

IP24

ATCO GAS

ATCO Gas Australia Meter Boxes for AL8-18 Gas Meters. Document Code: ENS TS001, Revision 7, 30.01.2017.

WESTERN POWER

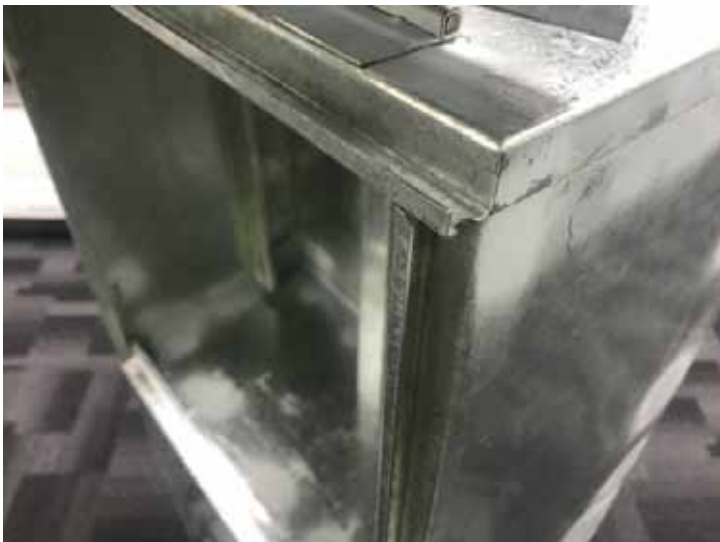
Horizon Power, Western Australian Distribution Connections Manual. Fifth Edition 2015.



DOMESTIC ELECTRIC METER BOX



DOMESTIC GAS METER BOX



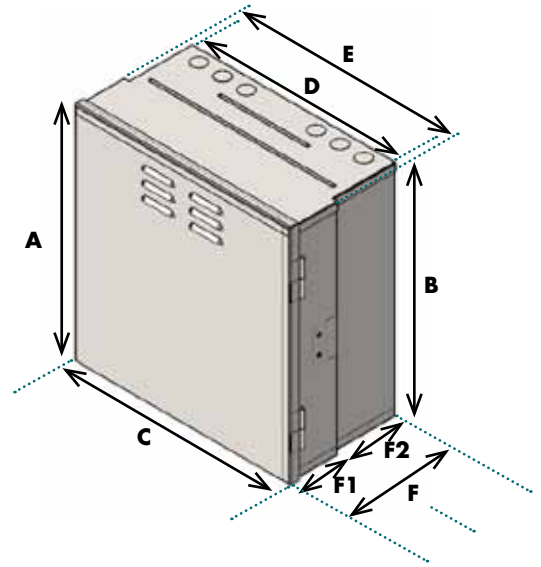
Engineered edges prevent water and objects entering

All models available with optional view panel & lock

METER BOXES

GAS, ELECTRIC & COMBINATION

SPECIFICATIONS



METER BOX	mm							
	A	B	C	D	E	F	F1	F2
Gas - Plain	514	505	497	-	492	258	-	-
Gas - Recessed	514	505	497	470	492	258	112	146
Electric - Plain	509	505	497	-	492	272	-	-
Electric - Recessed	509	505	497	470	492	273	127	146
Combination - Plain	1029	1023	497	-	492	272	-	-
Combination - Recessed	1029	1023	497	470	492	272	126	146

Optional view panel fitted to the left hand side of meter box lid.

metroll.com.au

Phone: 08 9365 5444
5 Chilver Street, Kewdale, WA 6105

Metroll Pty Ltd. ABN 28 008 775 442. All reasonable care has been taken in the compilation of the information contained in this brochure. All recommendations on the use of Metroll products are made without guarantee as conditions of use are beyond the control of Metroll Pty Ltd. It is the customers responsibility to ensure that the product is fit for its intended purpose and that the actual conditions of use are suitable. Metroll Pty Ltd. pursues a policy of continuous development and reserves the right to amend specifications without prior notice. The Metroll M and Logo are registered trademarks of Metroll Pty Ltd.