

ROLLER DOORS INSTALLATION GUIDE

DOMESTIC SERIES I & LIGHT INDUSTRIAL SERIES II

IMPORTANT! **IMPORTANT INFORMATION READ FIRST**

Roller door installation should only be carried out by a qualified installer. Serious injury can result from roller doors that have not been installed correctly.

DO NOT apply grease or oil to the roller door webbing or curtain guide channels.

DO NOT cut securing band or packing wrap until instructed in Step 3.

YOU WILL NEED...

- Electric Drill
- Masonry & Steel Drill Bits
- Hacksaw
- Adjustable Spanner
- Pipe / Stillson Wrench
- Metal File
- Spirit Level
- Piece of soft wood 75 x 25 x 400mm with one end cut at 45°.
- Adhesive Tape
- Rivet Gun - for installing lock set

IMPORTANT! **STEP 1. FIXING THE SUPPORT BRACKETS**

Prior to installation of the Roller Door ensure that the walls around the opening from which the door is to be fixed are structurally sound and that the appropriate hardware is used to install.

The support brackets should be fixed at least 70mm but no more than 210mm above the door lintel (See Fig.1).

Ensure that the correct clearance requirement depending on your door type is allowed for above the bracket level to accommodate the door in the fully rolled up position.

CLEARANCE REQUIREMENTS

ROLLER DOOR TYPE	DOOR HEIGHT	REQUIRED CLEARANCE
Series I - Domestic	Up to 2300mm	230mm
Series I - Domestic	Up to 3000mm	250mm
Series II - Light Industrial	3000mm	310mm



Mark the position of the bracket and drill holes with a masonry drill to suit the dyna bolts.

Securely fix both brackets to the wall and ensure they are perfectly level with each other (Fig. 2).

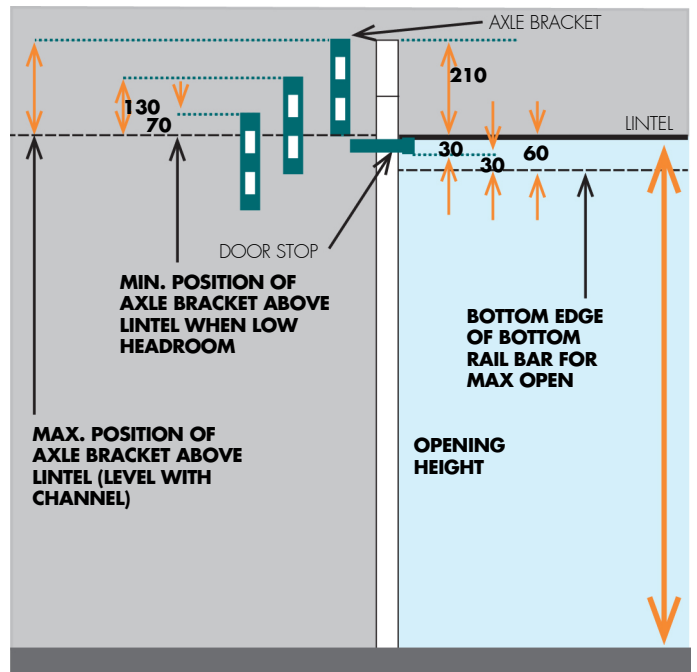


FIG.1 POSITIONING THE SUPPORT BRACKETS



FIG.2 ENSURE BRACKETS ARE LEVEL

STEP 2. POSITIONING THE DOOR

1. Lift the rolled up door onto the support brackets. Ensure any bands and packing wrap are still in place. If the central door axle is too long cut excess off with a hacksaw.
2. Refer to the table below for the correct position on the brackets. Ensure there is equal overlap on each side of the opening.

AXLE POSITIONING ON SUPPORT BRACKETS

ROLLER DOOR TYPE	DOOR HEIGHT	AXLE POSITION ON SUPPORT BRACKET
Series I	$\geq 2100\text{mm}$	Use the slot furthest from wall. Approx. 230mm from front of bracket to centre of axle.
Series II	$\leq 2100\text{mm}$	Approx. 230mm from front of bracket to centre of axle.
Series II	2400/2700mm	Approx. 245mm from front of bracket to centre of axle.

3. Place saddles between axle and support bracket and secure with U-bolts and nuts as shown in Fig. 3. Do not tighten U-bolts at this stage.

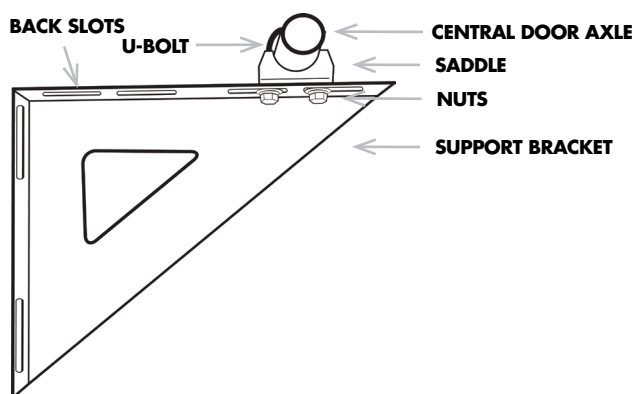


FIG. 3 SUPPORT BRACKET SHOWING SADDLE & AXLE POSITIONING

4. To ensure the door is balanced and central on the axle turn the door barrel 1/2 a turn and release and it will centre itself in the correct position.
5. Ensure there is an equal amount of door curtain either side of the garage door opening. If this is uneven adjust the roller door position between the support brackets to the desired position. Once this is done repeat point 4 as outlined above to re-center the door.
6. Tighten the U-bolts.

STEP 3. TENSIONING THE SPRINGS

Ensure the U-bolts are fully tightened and roller door is still strapped and wrapped. Rotate the door two full turns towards the door opening, this will tension the springs.

Holding the door securely to prevent unwinding, cut the straps and/or remove the packing wrap. Lower the curtain and insert the pre-prepared soft wood chock as per Fig.4.

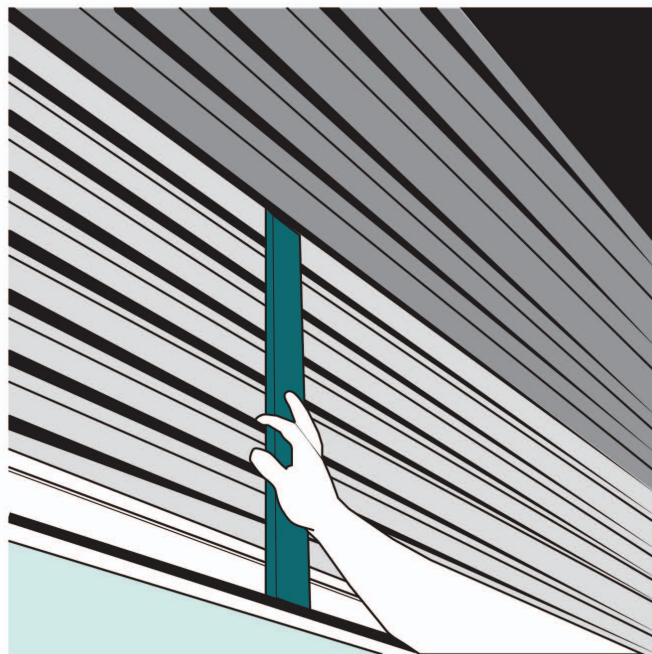


FIG.4 TENSIONING THE SPRINGS

STEP 4. FIXING THE CURTAIN STOPS (DOMESTIC SERIES I ONLY)

Check the curtain overlaps the door opening equally on both sides. Fix the plastic curtain stops to the bottom rail on either end.

STEP 5. FIXING THE CURTAIN GUIDE CHANNELS

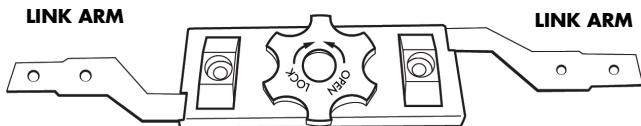
1. Position a curtain guide channel so that the top end is in line with the base of the door bracket. If the curtain guide channel is too long cut the excess off **from the bottom** using a hacksaw.
2. Slide the curtain guide channel onto the curtain edge and position so that there is a 5mm gap between the edge of the curtain and the inside face of the curtain guide channel.
3. Mark and drill a hole for the top channel retaining clip and bolt to the wall. With the top retaining clip fixed, use a level to ensure the curtain guide channel is vertical. Mark, drill and fix the bottom clip so it is approx. 180mm above floor level. Position and fix all other clips equal distance between top and bottom clips.
4. Repeat points 1 to 3 for the other side.

STEP 6. INSTALLING THE LOCK SET

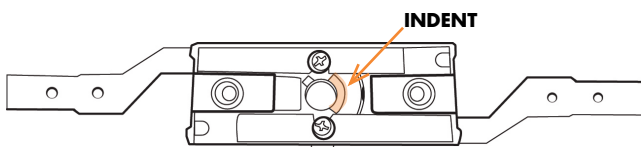
IMPORTANT!

Never raise the roller door with the key in the lock.

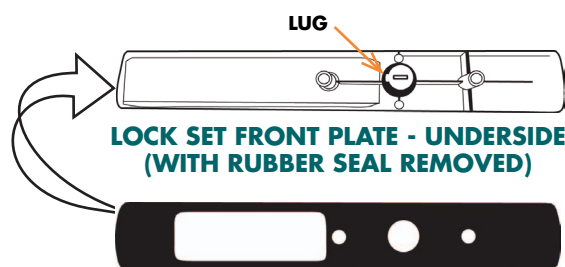
1. Cut slots in the curtain guide channels so they align with the locking bars.
2. View the underside of the lock set front plate and locate the lug. View the underside of the lock set backing plate and locate the indent. The lug must align with the indent to ensure the lock operates correctly.
3. From inside insert the lock set backing plate in the door cut-out. Hold in place temporarily with adhesive tape.
4. Attach the lock set face plate with the rubber seal to the outside of the door and hold in place with adhesive tape.
5. From inside fasten the 2 parts together with the screws and washers.
6. With the door closed, insert the locking bars (pointed end first) through the slots in the curtain guide channels, into the U-guides on the back of the door and align with the link arms in the lock set backing plate.
7. Attach the locking bars to the link arms on the lock set with the rivets.



LOCK SET BACKING PLATE - TOP



LOCK SET BACKING PLATE - UNDERSIDE



RUBBER SEAL



LOCK SET FRONT PLATE

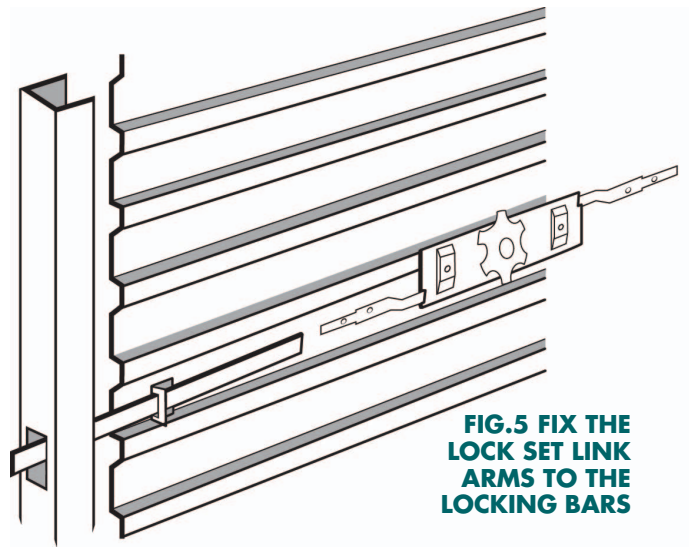


FIG.5 FIX THE LOCK SET LINK ARMS TO THE LOCKING BARS

ADJUSTING THE DOOR TENSION

The tension of the door spring determines the ease of operation of the door. If lifting the door is difficult, increase the tension of the spring. If lowering the door is difficult, loosen the tension of the spring.

IMPORTANT!

Be careful not to loosen the spring too much to avoid the door closing unaided as this can cause severe injury.

1. To make adjustments ensure the door is in the fully open position before commencing.
 2. Position yourself so you are on the left hand (LH) side of the door VILO, (LH side as viewed from inside looking out).
 3. Slightly loosen the first U-bolt over the central axle (See Fig.6. Item 3 over page).
 4. Apply the pipe/stilson wrench to the central door axle and hold firmly (See Fig.6, Item 4 over page).
 5. Slightly loosen the second U-bolt (See Fig.6, Item 5 over page).
 6. Rotate the central axle approximately a quarter turn (See Fig.7 over page):
To **increase tension** turn towards you (downwards).
To **loosen tension** turn anti-clockwise (away from you).
- IMPORTANT:** Ensure you are making adjustments from the LH side of the door (VILO). If you must make adjustments from the RH side (VILO) then the opposite applies.
5. Tighten all U-bolts.

ADJUSTING THE DOOR TENSION CONT.

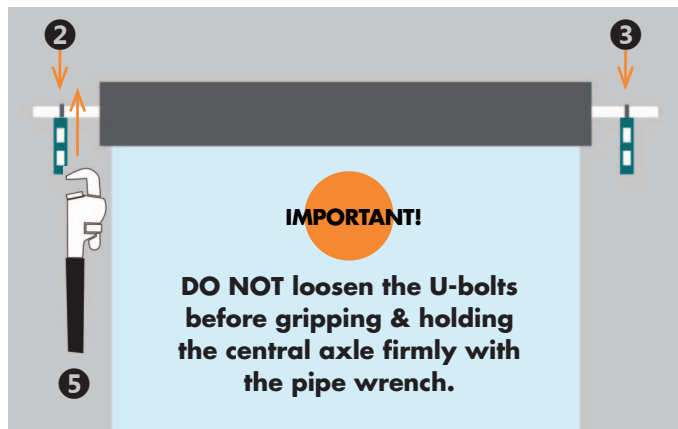


FIG.6 VIEW INSIDE LOOKING OUT

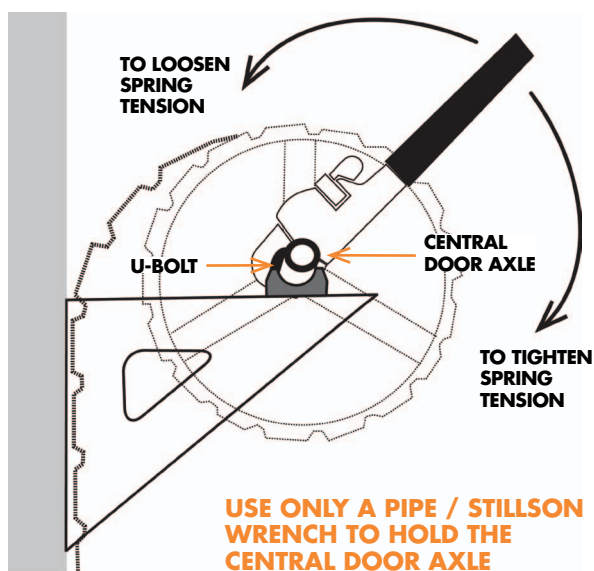


FIG.7 LEFT HAND SIDE FROM INSIDE LOOKING OUT

ROLLER DOOR CARE & MAINTENANCE

1. Metroll recommend the inside of the curtain guide channels are cleaned periodically using methylated spirits.
2. Never apply grease or oil to the curtain guide channels.
3. Regular washing of the door is required to prevent build up of grime and reduce the risk of corrosion.
4. Spring re-tensioning may be required at approx. 6 months or if it becomes difficult to operate.

INSTALLING A CENTRAL MULLION IN DOUBLE DOORS

1. Measure the width of the door opening at the lintel, locate and mark the centre point. Drop a plumb line from the centre position and mark on the floor.
2. Using a string line across the opening of the door at floor level, use the string line and the central mark to position the floor mounting plate. Ensure the plate is centred correctly and mark drill holes. Drill holes and fix the plate to the floor.
3. Position mullion bracket in central position above the lintel and draw guide lines down the outside edges of the bracket onto the lintel
4. Stand the mullion in the floor plate, fit the mullion bracket to the mullion with the panic bolt and line up with the guide lines on the lintel.
5. Move the bracket 2mm above the end of the mullion to allow clearance for the mullion to be inserted and removed. Mark and drill holes. Bolt the mullion bracket into position.

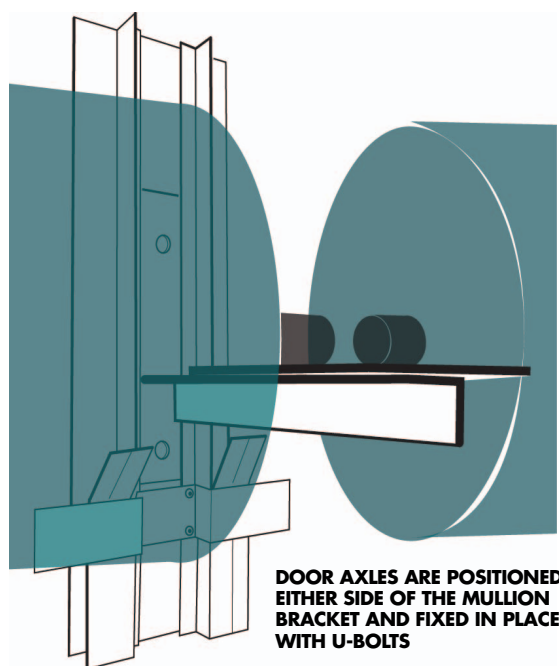


FIG.8 MULLION BRACKET

metroll.com.au

Phone: 08 9365 5444
5 Chilver Street, Kewdale, WA 6105



Metroll incorporating Roofmart and Mastertruss. ABN 28 008 775 442.

All reasonable care has been taken in the compilation of the information contained in this brochure. All recommendations on the use of our products are made without guarantee as conditions of use are beyond the control of Metroll. It is the customers responsibility to ensure that the product is fit for its intended purpose and that the actual conditions of use are suitable. Metroll pursues a policy of continuous development and reserves the right to amend specifications without prior notice. The Metroll M and Logo are registered trademarks of Metroll Pty Ltd. COLORBOND® is a registered trademark of BlueScope Steel Limited.

RDI_1&2_NOV18