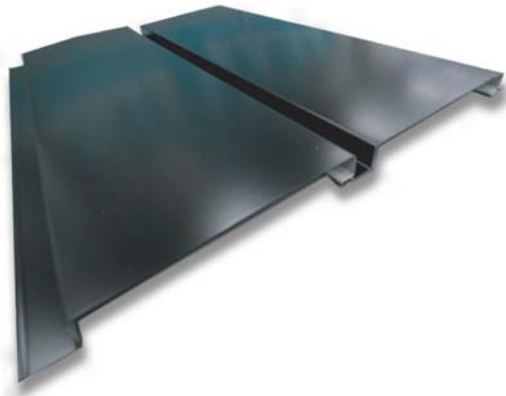


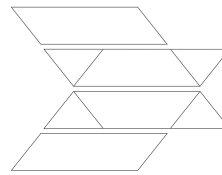


METROLL INTERLOCKING CLADDING



Metroll Interlocking Cladding is a concealed fix wall cladding system ideal for commercial and residential application.

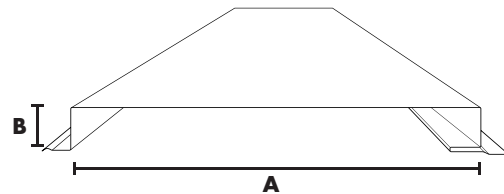
Panels can be installed horizontally, vertically or diagonally and with an adjustable shadow gap, making Metroll Interlocking Cladding a striking and versatile material choice.



metroll architectural collection

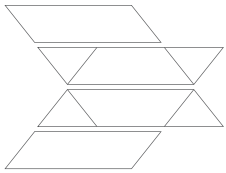
The Metroll Architectural Collection is a range of innovative and contemporary Roofing & Walling products. The many options for application provides limitless scope for design; and the quick and easy installation saves costs and time. The collection includes Metal Weatherboards, Interlocking Cladding, Standing Seam and Nailstrip Roofing & Cladding.

Width - A	285mm
Recess Size	20mm
Height - B	24.6mm
Length	Up to 6 metres



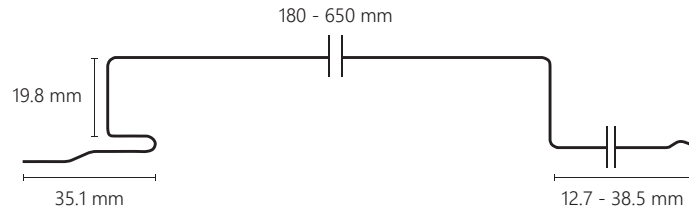
Material Availability

0.55mm BMT COLORBOND® steel | COLORBOND® Ultra | COLORBOND® Metallic | ZINCALUME® steel.



metroll
architectural
collection

METROLL INTERLOCKING CLADDING



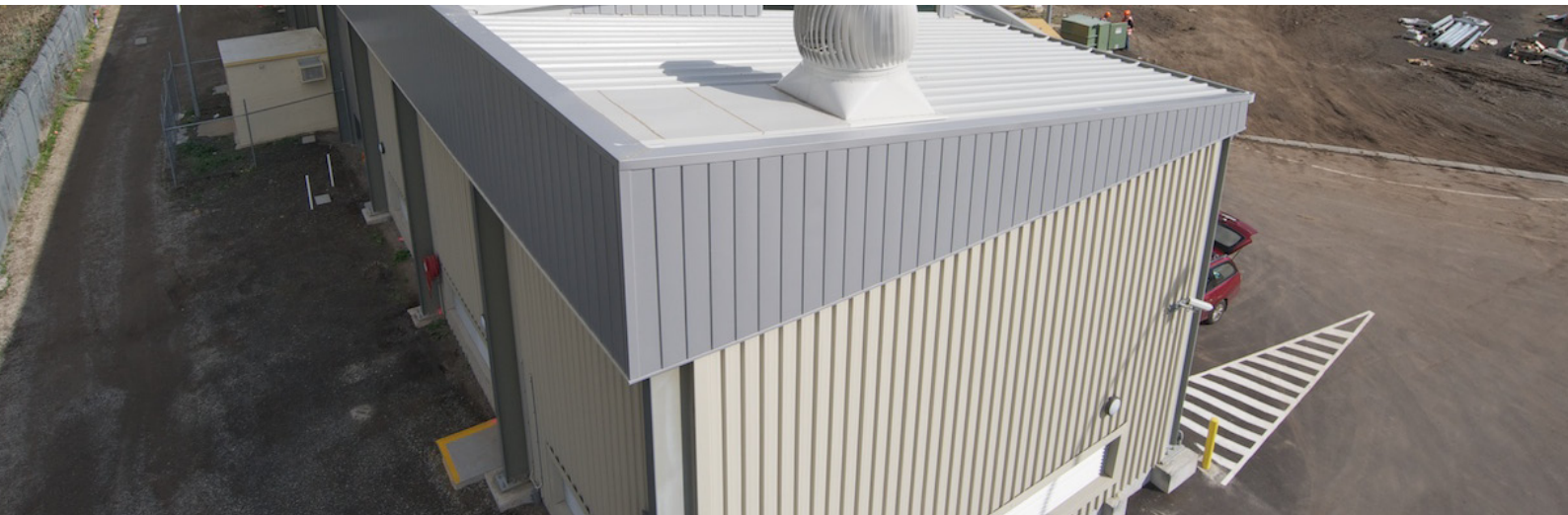
Installation

Installation of Interlocking Cladding is simple and quick with one panel interlocking into the next and fixed with a concealed fastener.

Fixing

Top Hat Installation Requirements: Galvanised Top Hats 1.15 x 35mm spaced at maximum 600mm centres and fixed at maximum 500mm centres perpendicular to direction of panel. Breathable, waterproof membrane required. Fix Interlocking Cladding panel to Top Hat at maximum 500mm centres and maximum 100mm from end of panel.

Oil Canning is the looseness which can develop in the flat pan of cold formed metal products and which can affect the aesthetic of the finished installation. It is not a structural defect. Oil Canning is caused by many factors, various measures applied during product installation can mitigate the risks. Oil Canning can occur with any colour finish, but is generally more evident with darker colours. Metroll recommend designers take this into consideration.



metroll.com.au

102 William Angliss Drive | Laverton North, VIC 3026 | P: 03 8369 8300
55 Wills Crescent | Moolap, Geelong VIC 3224 | P: 03 5248 2006
7 - 9 Rapid Way | Pakenham, VIC 3810 | P: 8710 9300
1 - 11 Bellevue Crescent | Preston, VIC 3072 | P: 03 9480 3744
20 Wiltshire Lane | Ballarat, VIC 3356 | P: 03 5335 6416
MAC_IC_1218

