

## CYCLONIC LIMIT STATE SPAN TABLES

# 0.42 BMT CORODEK<sup>®</sup> RESIDENTIAL ROOFING

### 40 x 0.75mm Battens CYCLONE WASHERS FITTED

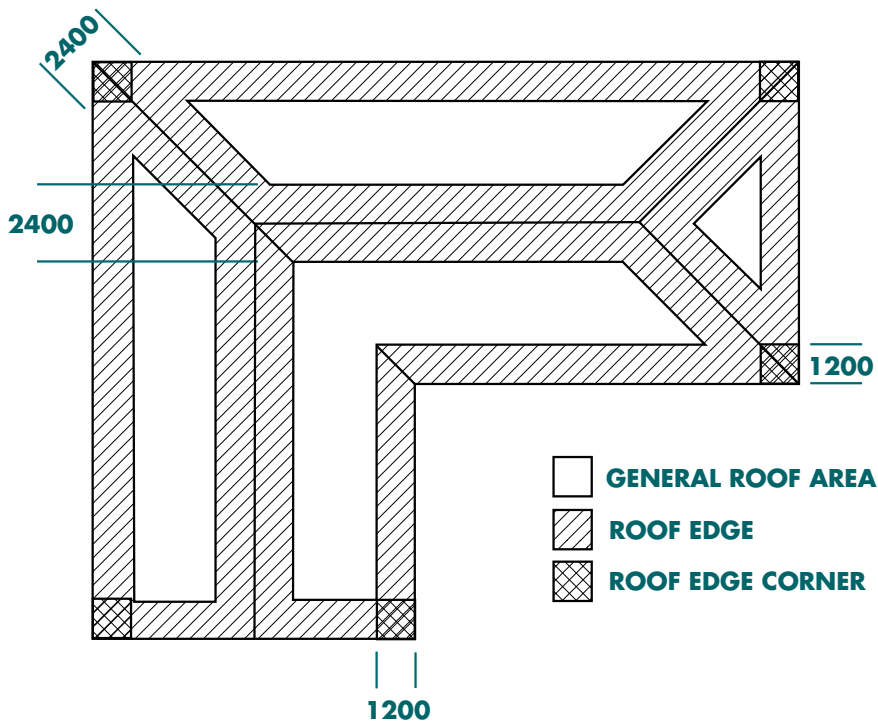
WIND CATEGORY	900mm TRUSS SPACING			1200mm TRUSS SPACING			
	Constant Batten Spacing	Variable Batten Spacing			G	RE	RC
		G	RE	RC			
C1	850	1350	1050	790	1250	800	590
C2	570	1130	720	530	850	540	400
C3	350*	760	490	450*	570	370	350*

### NO CYCLONE WASHERS FITTED

C1	690	1330	890	690	1250	800	590
C2	490	930	630	490	840	540	400
C3	350*	670	450	450*	570	370	350*

\* Fasteners fixed to every rib

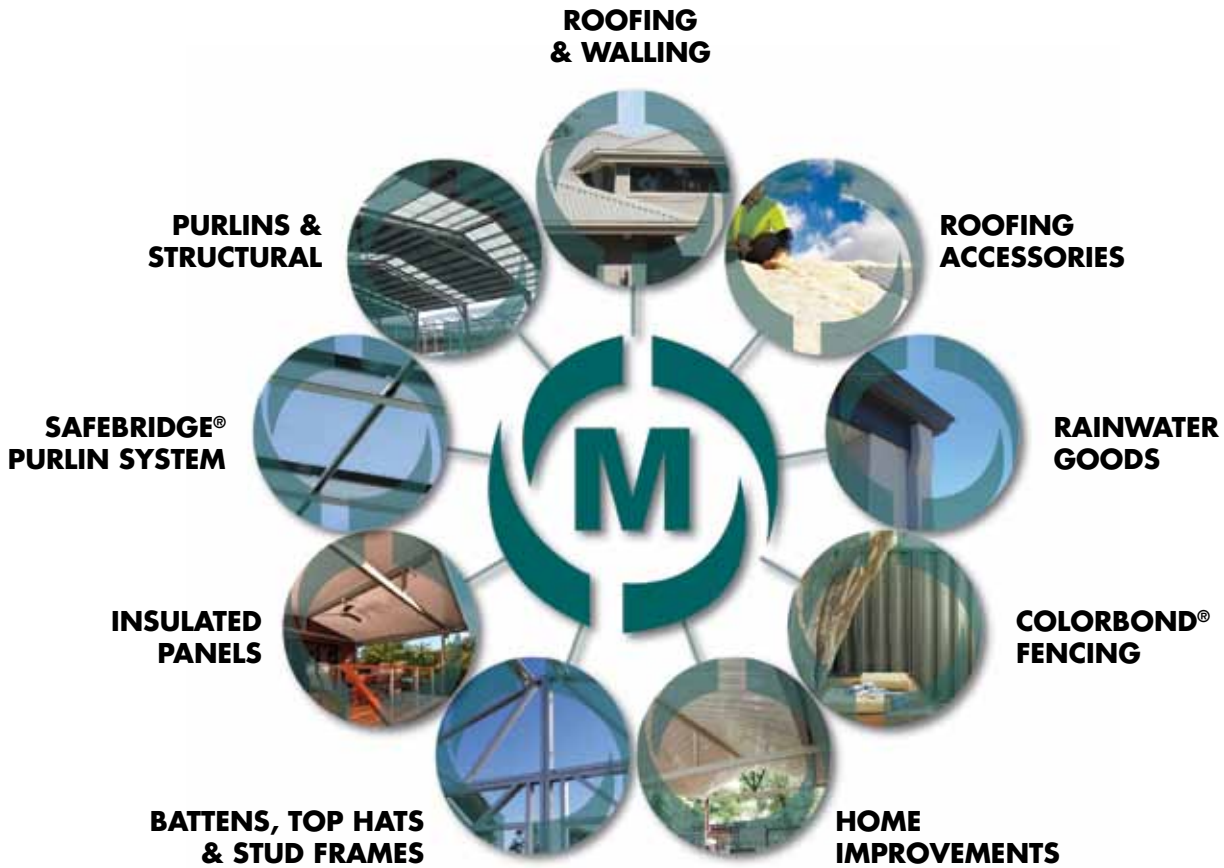
NS = Not Suitable, G = General Areas, RE = Roof Edges, RC = Roof Corners



### NOTES

1. This table is for use on residential projects that fall within the requirements of AS 4055 or AS 1684.
2. This table has been prepared by LCJ Engineers Pty. Ltd. and is based on the Low High Low testing completed by the Cyclone Testing Station (CTS), School of Engineering, James Cook University. The results of this testing are outlined in the test reports TS716 and TS638 produced by the CTS. Ultimate cyclic wind load tests were NATA accredited tests.
3. This table has been based on an ultimate roof sheeting fixing to batten load of 0.89kN. If the fixing capacity of the roof sheeting to batten is less than this the table may not be valid.
4. Roof sheeting shall be crest fixed to supports with M6-11 x 50mm Roof ZIPS self drilling screws. Fixings shall be in accordance with the manufacturers recommendations and shall be at every second rib.
5. Maximum batten spacings shown above are only applicable to battens spanning three or more equal end spans. Maximum batten spacings nominated for edges must be maintained within 1200mm of edges of all eaves and ridges, maximum batten spacings nominated for corners must be maintained within 1200mm of two adjacent edges (refer to figure for guidance).
6. The spacings in the table are applicable for batten overhangs of up to 300mm. Batten overhangs greater than 250mm will exceed the recommended serviceability limit for roof traffic loads of 1.1 kN.
7. Battens shall be fixed to timber supports with 2x M5.5 x 40 Batten ZIPS. All supports shall have a minimum joint group of JD4 and shall be 30mm wide minimum.
8. This information provided is as far as possible accurate at the date of publication, however, prior to use Metroll Pty. Ltd recommend you obtain qualified expert advice confirming the suitability of product(s) and information obtained herein.

Can we assist with any additional  
Steel Building Products?



**QLD**  
 Cairns 07 4054 0888  
 Townsville 07 4779 8266  
 Mackay 07 4968 1255  
 Rockhampton 07 4920 0900  
 Bundaberg 07 4155 5999  
 Toowoomba 07 4634 6144  
 Sunshine Coast 07 5493 7872  
 Brisbane 07 3375 0100

**NSW**  
 Lismore 02 6622 6677  
 Tamworth 02 6765 4799  
 Newcastle 02 4954 5799  
 Sydney 1300 766 346  
 Dubbo 02 6883 4800  
 Wagga Wagga 02 5924 4500  
**ACT**  
 Canberra 02 6298 2777

**VIC**  
 Preston 03 9480 3744  
 Laverton 03 8369 8300  
 Geelong 03 5248 2006  
 Ballarat 03 5335 6416  
 Pakenham 03 8710 9300  
**SA**  
 Adelaide 08 8282 3300

**TAS**  
 Launceston 03 6335 8555  
**NT**  
 Darwin 08 8935 9555  
**WA**  
 Perth 08 9365 5444  
 Bunbury 08 9796 9796  
 Albany 08 9841 6966

## 26 Metroll Branches Nationwide

visit our new website  
[metroll.com.au](http://metroll.com.au)



Metroll Pty Ltd. ABN 97 001 446 439. All reasonable care has been taken in the compilation of the information contained in this brochure. All recommendations on the use of Metroll products are made without guarantee as conditions of use are beyond the control of Metroll Pty Ltd. It is the customers responsibility to ensure that the product is fit for its intended purpose and that the actual conditions of use are suitable. Metroll Pty Ltd. pursues a policy of continuous development and reserves the right to amend specifications without prior notice. The Metroll M and Logo are registered trademarks of Metroll Pty Ltd. COLORBOND®, ZINCALUME®, GALVASPAN® steels are all registered trademarks of BlueScope Steel Limited.