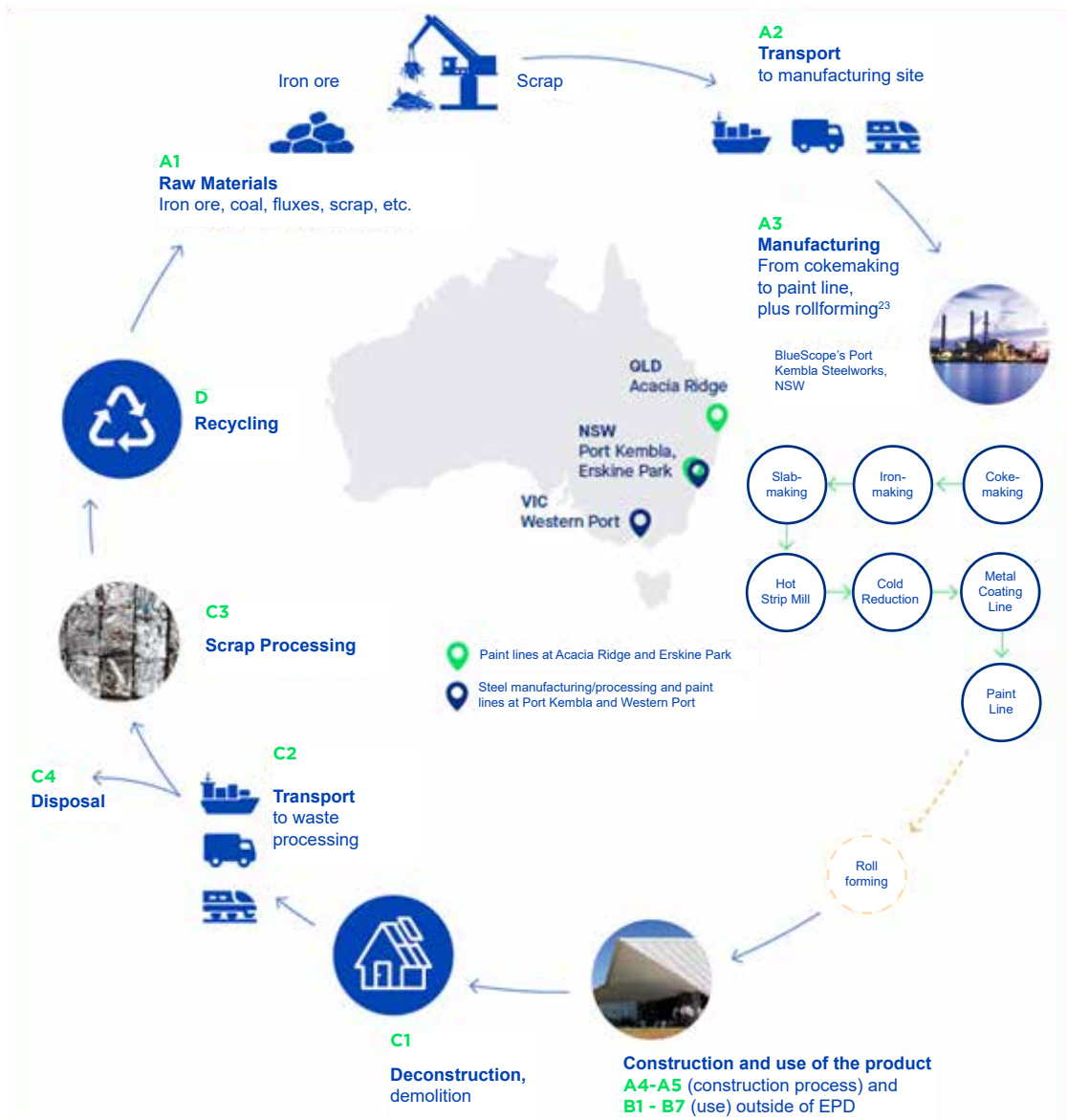


ENVIRONMENTAL PRODUCT DECLARATION (EPD)

Metroll supplies products made exclusively from BlueScope Steel. Currently Metroll has not produced our own EPD's but has participated in the development of BlueScope's EPD statements. Metroll provided relevant information about the rollforming process for inclusion. Even though it is a small component of the lifecycle, rollforming of the finished product has been included. An overview of the scope of BlueScope Steel's declaration can be seen below.

For more information. <https://steel.com.au/resources/articles/environmental-product-declarations-epds>



Note #25 BlueScope Steel, EPD Colorbond: roll formed products.

To provide indicative results for the final formed product up to the rollforming gate, data has been obtained from selected sites of several rollformers based in Australia. Results are based on rollforming data corresponding to a 12-month period, which varied by rollformer (ranging from July 2018 to June 2021). The results represent an average of the data from the surveyed sites only. These results may not be representative of the final formed product from the rollforming operations of other companies or sites. Actual results will vary depending on a range of factors specific to the operations of the downstream processors.

BLUESCOPE GREENTAG CERTIFICATION

BlueScope has Global GreenTagCert™ GreenRate™ product certification

BlueScope's COLORBOND® steel for exterior roofing and walling have achieved a 'Level A' rating for Global GreenTagCert™ GreenRate™ certification.

GreenRate™ is a robust and comprehensive third-party verified ecolabelling program aligned with the ISO 14024 standard for environmental labels and declarations. It evaluates products against a range of sustainability attributes, including health and ecotoxicity of materials and availability of environmental footprints (water and carbon). The program also evaluates the manufacturer's environmental and social responsibility performance across a range of criteria, including environmental management systems, and ethical labour and supply chains.

BLUESCOPE PRODUCTS

The following products are in conformance with the Global Green Tag^{Cert™} Scheme for the Tier and Level:

COLORBOND® steel

0.30mm, 0.35mm, 0.40mm, 0.42mm, 0.45mm, 0.48mm, 0.55mm, 0.60mm, 0.70mm, 0.75mm, 1.00mm

Please see the certificate posted on this site:

<https://www.metroll.com.au/resources/bluescope-greentag-certificate/>