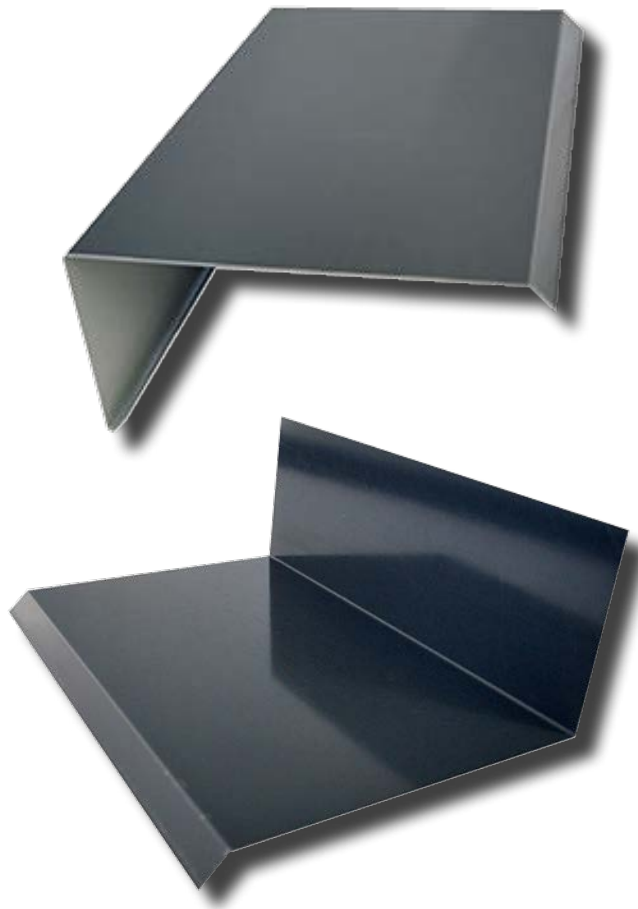


FLASHINGS

STANDARD & CUSTOM MADE



A Met-TECH™ GUIDE

APRIL 2026



Metroll®

BETTER SERVICE • BETTER BUILDING SOLUTIONS

METROLL FLASHINGS

Metroll offer a comprehensive selection of flashings, barge ends, corner trims and foot moulds. All are manufactured to complement the appearance and functionality of Metroll gutters, claddings, roofing and building products. Metroll flashings come in a range of styles, colours and sizes to suit commercial, residential, industrial and rural applications. Materials include COLORBOND®, ZINCALUME® and galvanised steels in a range of widths up to 1200mm.

STANDARD & CUSTOM FLASHINGS

Standard flashings include ridge caps, valley gutters, corner moulds, end aprons and barge cappings. These products have predetermined bends and lengths to suit Corodek®, Trimclad®, Metlok 700®, Metrospan®, Metroclad®, Metrib®, Mini Corodek® and Spanplus 500®. Almost any size and shape of flashing can be manufactured in a range of materials and colours. Standard Metroll flashings are manufactured up to 1200mm wide. Custom made flashings can be made in varying lengths up to a maximum of 8m.

MATERIAL COMPATIBILITY

ROOF OR RAINWATER MATERIAL	DIRECT MATERIAL CONTACT									DRAINAGE FROM UPPER SURFACE TO LOWER SURFACE									
	ACCESSORY, FASTENER OR UPPER SURFACE																		
	ZINCALUME®	Galvanised	Zinc	COLORBOND® steel	SUPERDURA® stainless steel	Stainless Steel	Aluminium Alloys	Copper & Alloys	Lead	ZINCALUME®	Galvanised	Zinc	COLORBOND® steel	SUPERDURA® stainless steel	Stainless Steel	Aluminium Alloys	Copper & Alloys	Lead	Roof Tiles, Glass, Plastic
ZINCALUME® steel	✓	✓	✓	✓	x	x	✓	x	x	✓	✓	✓	✓	✓	✓	✓	x	x	✓
Galvanised	✓	✓	✓	✓	x	x	✓	x	x	x	✓	✓	x	x	x	x	x	✓	x
Zinc	✓	✓	✓	✓	x	x	✓	x	x	x	✓	✓	x	x	x	x	x	✓	x
COLORBOND® steel	✓	✓	✓	✓	x	x	✓	x	x	✓	✓	✓	✓	✓	✓	✓	x	x	✓
SUPERDURA® stainless steel	x	x	x	x	✓	✓	x	x	x	✓	✓	✓	✓	✓	✓	✓	✓	✓	✓
Stainless Steel	x	x	x	x	✓	✓	x	x	x	✓	✓	✓	✓	✓	✓	✓	✓	✓	✓
Aluminium Alloys	✓	✓	✓	✓	x	x	✓	x	x	✓	✓	✓	✓	✓	✓	✓	x	x	✓
Copper & Alloys (C&A)	x	x	x	x	x	x	x	✓	x	✓	✓	✓	✓	✓	✓	✓	✓	✓	✓
Lead	x	x	x	x	x	x	x	✓	✓	✓	✓	✓	✓	✓	✓	✓	✓	✓	✓

Never use lead products with products made from COLORBOND® and ZINCALUME® steels. Avoid drainage from copper products onto COLORBOND®, ZINCALUME® or galvanised steel. Bare metal and some chemically treated timbers are not compatible with COLORBOND®

What is Met-TECH™?

Met-TECH™ is Metroll's Technical Resource Centre. It is the one stop shop for all of Metroll's product and technical information. Perfect for builders, contractors and specifiers to source all the information they may require. You can find other Met-TECH™ items on our website www.metroll.com.au/resources

ADVERSE CONDITIONS

Localised environmental conditions can impact the corrosive nature of a site which may impact on material choice. Conditions that may impact on material choice include; direction of prevailing winds, rainfall intensity, duration of exposure, temperature, shelter and areas not washed by rainfall. Contact your local Metroll branch if you intend to use flashing products within 1km of industrial, chemical, marine or corrosive environments.

AVAILABILITY & DELIVERY

Metroll flashings are available from the national network of Metroll offices. Contact your local Metroll branch for delivery days in your area.

CUSTOM MADE FLASHINGS

GUTTERS

1 	2 	3 	4 	5 	6 	7
8 	9 	10 	11 	12 	13 	14
15 	16 	17 	18 	19 	20 	

CAPPINGS

21 	22 	23 	24 	25
26 	27 	28 	29 	30
31 	32 	33 	34 	35

FLASHINGS

36 	37 	38 	39 	40
41 	42 	43 	44 	45
46 	47 	48 	49 	50

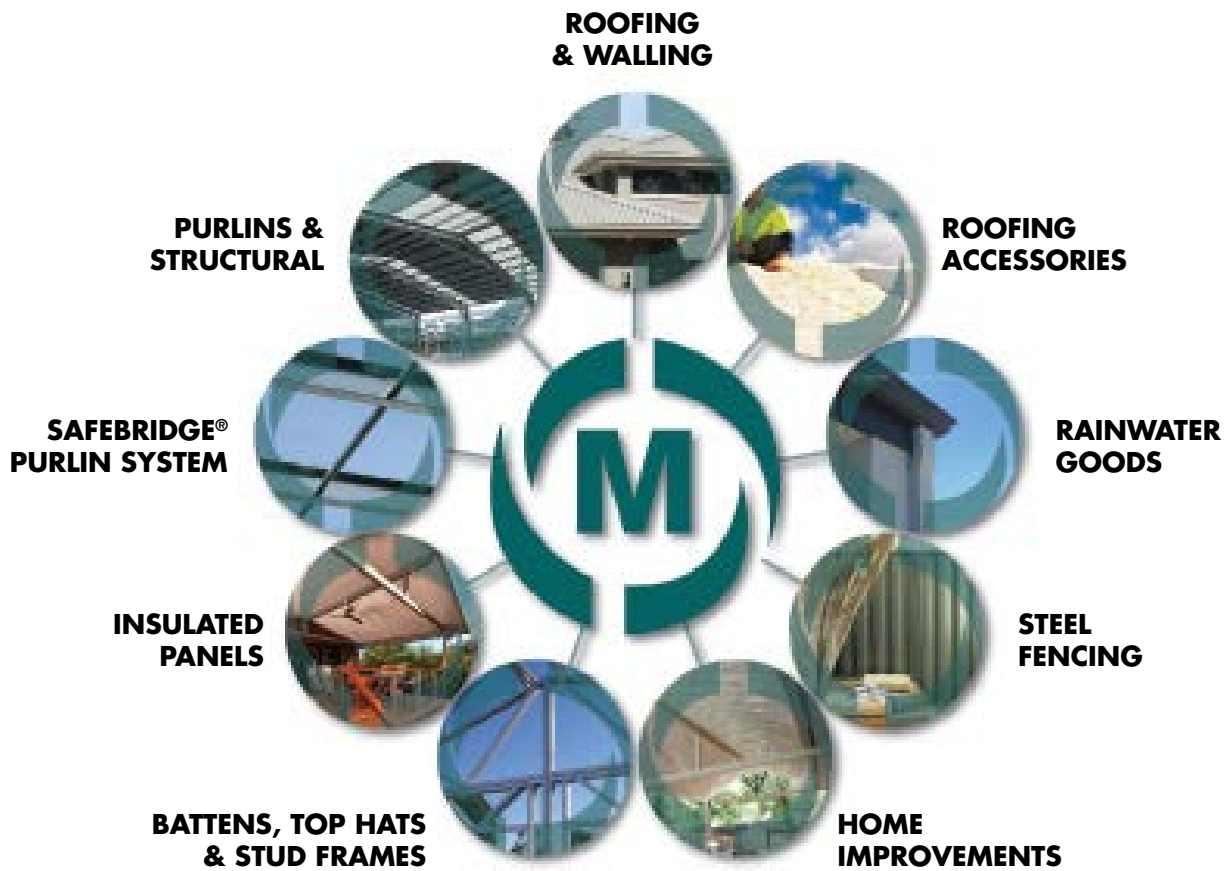
OTHER

51 	52 	53 	54 	55
56 	57 	58 	59 	60

HOW TO ORDER:

1. Choose the appropriate profile number, material thickness and finish.
2. Should COLORBOND® steel be required, nominate which side the colour is to be.
3. Identify the measurement for each letter shown.
4. Identify the angle where applicable.
5. Specify direction for tapered flashings.
6. Advise the quantity and length applicable to each profile.
7. Include a flashing sketch to ensure order accuracy.

Can we assist with any additional Steel Building Products?



QLD		NSW		VIC		NT	
Brisbane	07 3375 0100	Albury	02 6043 6800	Ballarat	03 5335 6416	Darwin	08 8935 9555
Bundaberg	07 4155 5999	Canberra	02 6298 2777	Geelong	03 5248 2006	SA	
Cairns	07 4054 0888	Dubbo	02 6883 4800	Laverton	03 8369 8300	Adelaide	08 8282 3300
Mackay	07 4968 1255	Lismore	02 6622 6677	Pakenham	03 8710 9300	WA	
Rockhampton	07 4920 0900	Newcastle	02 4954 5799	Sunshine	03 9480 3744	Albany	08 9841 6966
Sunshine Coast	07 5493 7873	Smithfield	02 9756 5277	TAS		Bunbury	08 9796 9796
Toowoomba	07 5634 6144	Sydney	1300 766 346	Hobart	03 6335 8555	Kalgoorlie	08 9024 1388
Townsville	07 4779 8266	Tamworth	02 6765 4799	Launceston	03 6335 8555	Perth	08 9365 5444
		Wagga Wagga	02 5924 4500				

30 Metroll Branches Nationwide

Visit our website
metroll.com.au



All reasonable care has been taken in the compilation of the information contained in this brochure. All recommendations on the use of Metroll products are made without guarantee as conditions of use are beyond the control of Metroll. It is the customers responsibility to ensure that the product is fit for its intended purpose and that the actual conditions of use are suitable. Metroll pursues a policy of continuous development and reserves the right to amend specifications without prior notice. The Metroll M and Logo are registered trademarks of Metroll. COLORBOND®, ZINCALUME®, GALVSPAN® steels are all registered trademarks of BlueScope Steel Limited.